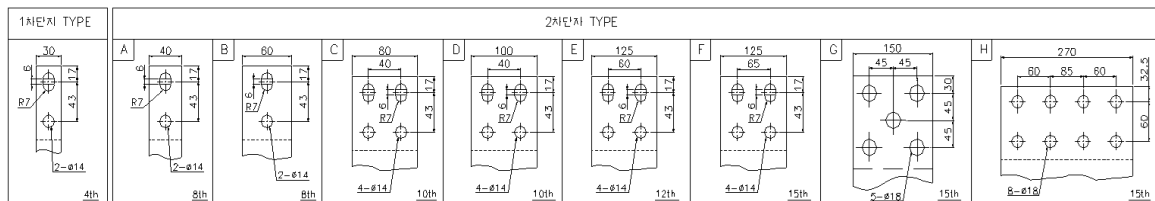
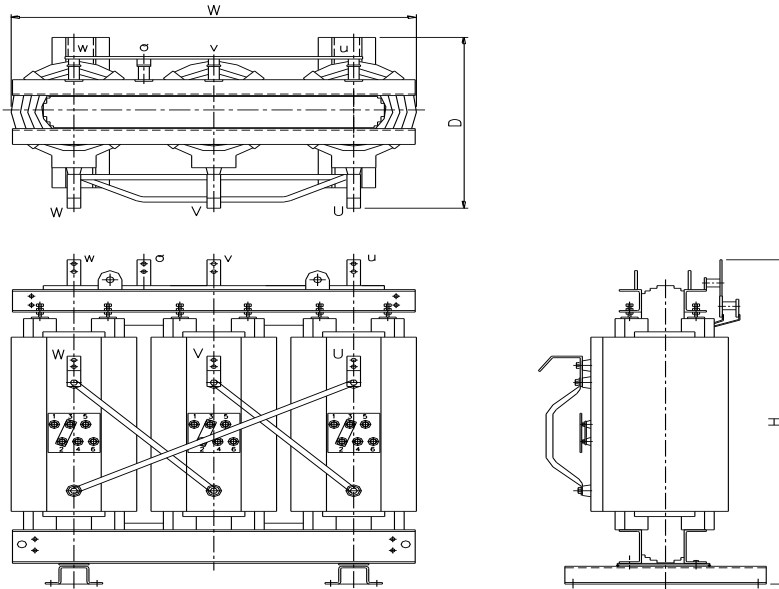


외형치수 및 특징 SM-SAAH [표준소비효율]

DIMENSION & FEATURE



3P 22.9KV/380-220V

용량	효율(부하율)		무부하전류	전압변동율	외형 치수(mm)			중량	2차단자	
(KVA)	50%	100%	(%)	(%)	W	D	H	(KG)	두께*폭	TYPE
100	98.90	98.7	2.0	1.3	1340	790	1245	920	8t*40	A
200	99.00	98.7	1.0	1.3	1315	785	1430	1150	8t*40	A
300	99.10	98.7	1.0	1.3	1315	785	1430	1250	8t*40	A
400	99.20	98.9	1.0	1.2	1410	845	1490	1600	8t*60	B
500	99.20	98.9	1.0	1.1	1470	855	1480	1750	10t*80	C
600	99.30	99.1	1.0	1.0	1525	865	1540	2100	10t*80	C
750	99.30	99.1	1.0	1.0	1525	865	1640	2250	10t*100	D
1000	99.40	99.2	1.0	1.0	1670	950	1760	2800	12t*125	E
1250	99.40	99.2	1.0	1.0	1730	960	1775	3250	12t*125	E
1500	99.50	99.3	1.0	1.0	1835	1010	1930	3700	15t*150	G
2000	99.50	99.3	1.0	1.0	1960	1025	2160	4800	15t*270	H
2500	99.50	99.3	1.0	1.0	2140	1120	2210	6200	15t*270	H
3000	99.50	99.3	1.0	1.0	2180	1220	2390	7200	20t*270	H

* 상기 초과용량 및 기재되지 않은 SPEC.도 주문에 의하여 제작이 가능합니다.